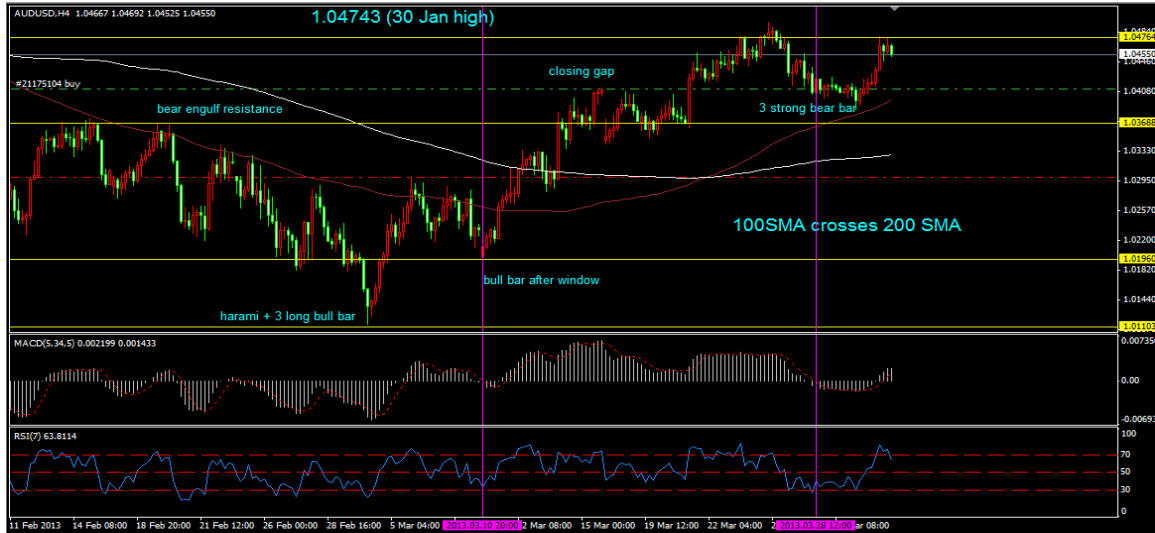


PAIR	AUDUSD	
DATE & TIME	31/3/2013	Week 14
CHARTING Focus	H4, H1 view	
TO DO	LONG	
Entry Point: (waiting)	1.0400	1.0420
TP:	1.0585	1.05850
SL:	1.0320	1.03550
RRR:	1: 2.31	1: 2.54
Status	In progress	Waiting

Market View:

After hitting 38.2% retracement (supported by MACD/RSI divergence), we see that AUDUSD rebounded back and trading as high as 1.0477, which is a good resistance as 1.04743 is 30 JAN high. We will look if AUD will continue its bullishness after RBA holds rate at 3.00%. Overall, still hold that AUD on bullish term, expecting a small retracement to 1.0420 before uptrending again.

H4 View



H1 View

